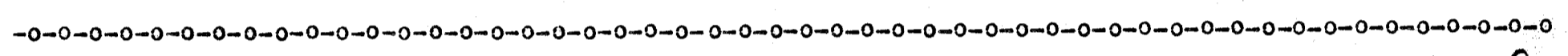
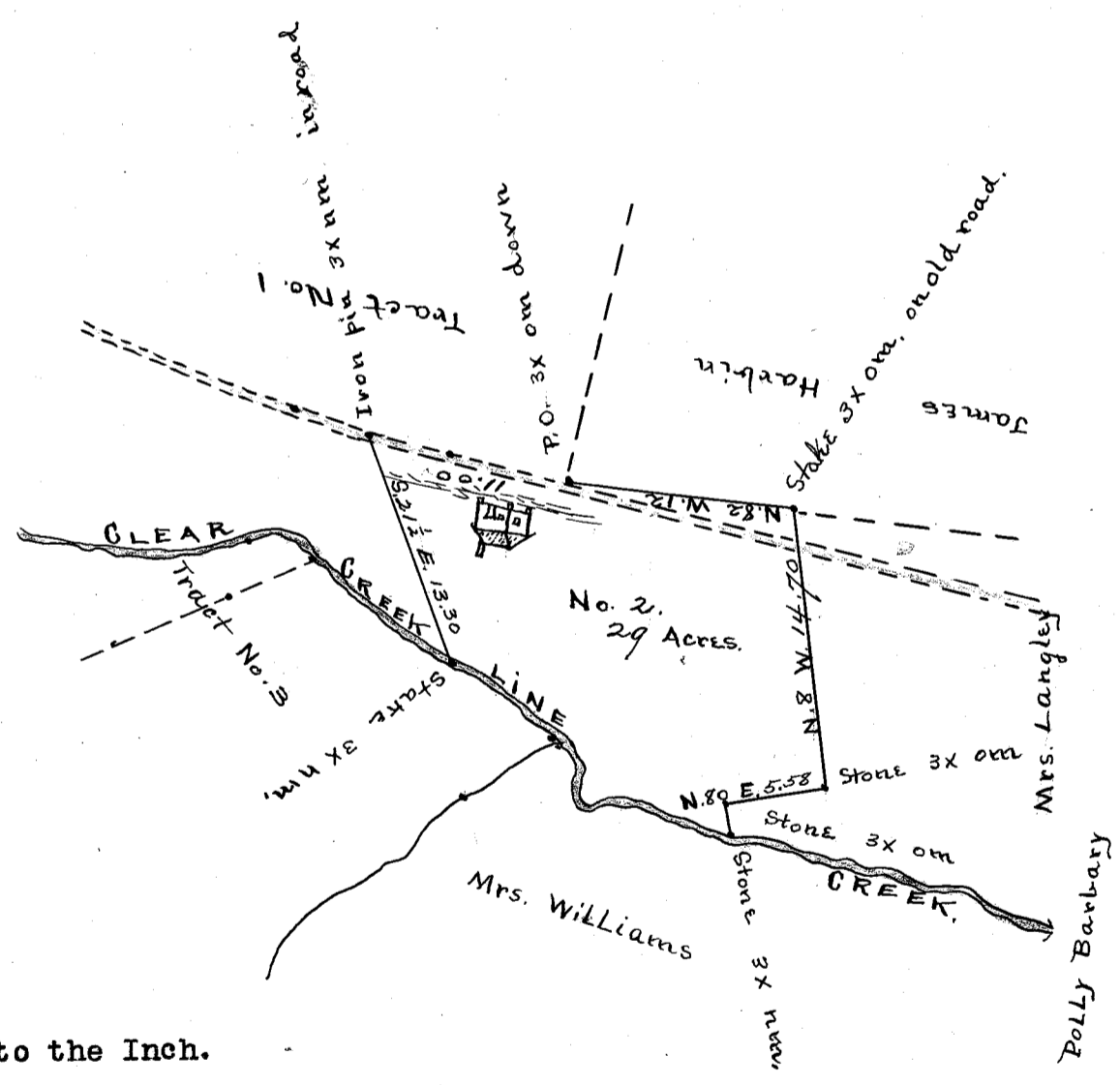


Scaled at 10 chs. per inch.

South Carolina,
 Greenville County. The above plat describes (22) twenty-two acres of land on the South side of
 Paris Mountain, surveyed for A.B. Davidson and hath such shapes, marks and bounds as above shown.
 Surveyed January 16th, 1907.
 Wm. A. Hudson, D.S. Recorded December 17th, 1908.
 and Platted by J.B.---



289



Scale of 10 Chs. to the Inch.

The above plat representing Tract No. 2 of the Geo. M. Stewart land on waters of South Tiger
 River in O'Neall Township and Greenville County and State of South Carolina.
 Surveyed and divided April 11th, 1898.

J.N. Southern, D.S. Recorded for Nov. 14th, 1910.
 and Copied by J. B.